



The Central Ohio Section of the American Society of Highway Engineers is pleased to announce their January 2012 Luncheon Meeting:

Mobile Mapping – Static Laser Scanning Explained

Tuesday, January 17, 2012

- Registration: 11:30 am
- Lunch: 12:00 pm
- Program: 12:20pm

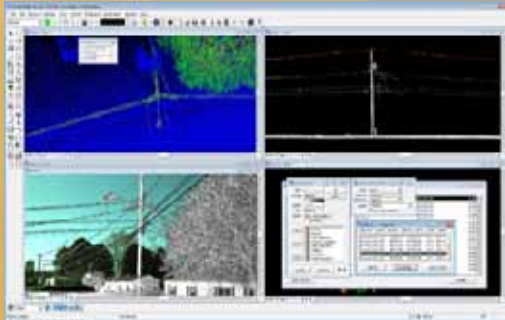
Crown Plaza Columbus North

6500 Doubletree Avenue
Columbus, OH 43229



Speaker:

Brian Stevens, Certified Photogrammetrist,
Project Manager, Woolpert, Inc.



Mobile Mapping is the next step in providing comprehensive, immersive Geospatial information to Highway engineers. Static Laser Scanning has evolved into scanning at highway speeds, and Mr. Stevens will show several project examples of these cutting edge technologies for transportation use.”

**** 0.5 PDH credit will be provided ****

Menu:

London Broil-marinated flank steak served with a roasted shallot mushroom sauce along with a baby spinach salad, chef’s selection of fresh vegetable & desert. A vegetarian meal is also available upon request.

Cost:

Members	\$ 25.00
Non-Members	\$ 30.00



Prepayment is encouraged online via PayPal or mailing a check to:

Central Ohio ASHE
c/o Franklin County Engineers Office
970 Dublin Road
Columbus, OH 43215

NOTE: Please note that no-shows will be billed for the luncheon, as the Crowne Plaza will charge ASHE based on the number of reservations, not the number of actual attendees.

Reservations: RSVP by Thursday, January 12th

at: www.centralohioashe.org.

